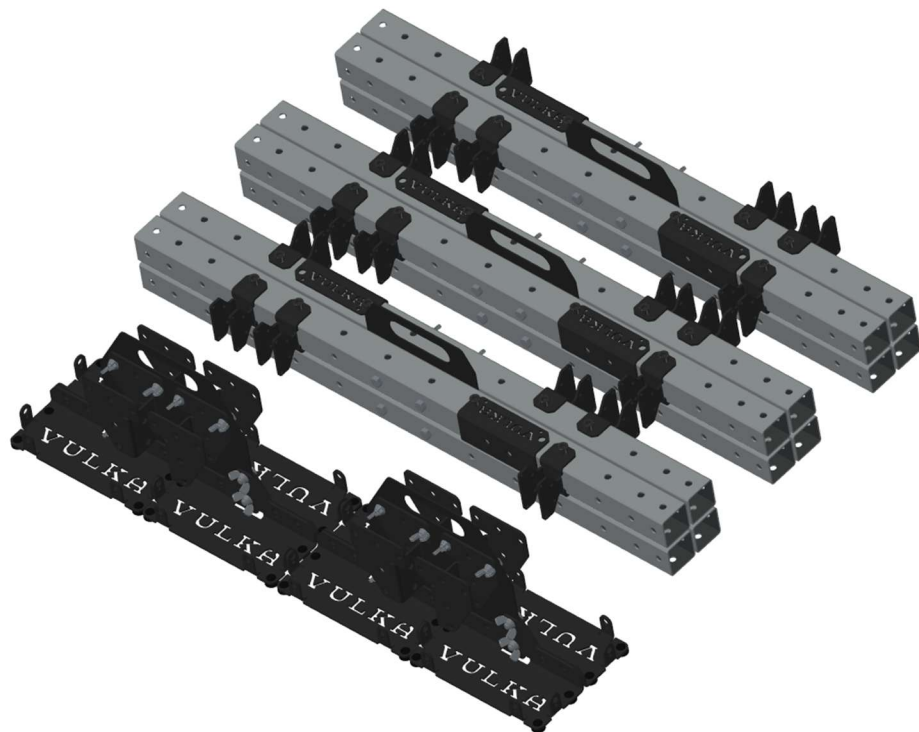


VULKA



FIRE EQUIPMENT

VTS Field Guide:
Carrier System Add-On







SAFETY PRECAUTIONS



ALWAYS Use Personal Protective Equipment

Always wear appropriate P.P.E. including helmet, gloves, and eye protection when setting up and operating this equipment. Wear hearing protection during the operation of powered equipment.

Never Exceed Weight Limitations

Weight limitations for this equipment are available in this guide. Under most circumstances, this equipment can support 1500 pounds, inclusive of the weight of lumber/sheathing/materials used.

Never Use Damaged Parts

If a part is bent, cut, dented or otherwise damaged, DO NOT use that part. Replacement parts are available by contacting support@vulkafire.com. Paint/powder coat chipping and scratching are expected during normal use and will not affect the equipment operationally.

Always Use Official Vulka Parts and Hardware

Only use parts and equipment designed for this product. Using anything other than Vulka Fire Equipment approved parts will void the warranty and could lead to failure of the system and subsequent injury. Replacement parts are available by contacting support@vulkafire.com.

Do Not Practice Techniques You Have Not Been Trained On

Firefighting is a dangerous job and the techniques involved could lead to injury, even in a controlled environment, if executed poorly or improperly. Always ensure that instructors are trained and competent in the subject matter being practiced and are appropriately trained to instruct.

Do Not Operate Power Tools or Equipment You Are Not Familiar With

Always follow the manufacturer's recommended operating procedures and safety precautions when using power tools and equipment. Failure to do so could result in injury.

Always Use Fall Protection When Operating at Height

Most configurations of this system will not place the user above 4' off the ground. If using a configuration that places personnel above 4', ensure fall protection is provided per OSHA requirements.





Overview

The Carrier System add-on for the VTS provides a convenient method for packaging and transporting the entire system. Once assembled using the carriers, the VTS will take up less than 48"x40" of floor space.

Tools & Materials

The following parts and materials will be needed:

- (1) VTS Unit
- (1) VTS Carrier System Add-on:
 - (2) Large plates
 - (3) Small plates
 - (12) ½"-13 bolts, 5.5" length
 - (16) ½"-13 bolts, 1" length
 - (1) Heavy duty utility bag

Set Up

This Field Guide will cover how to set this configuration up properly.

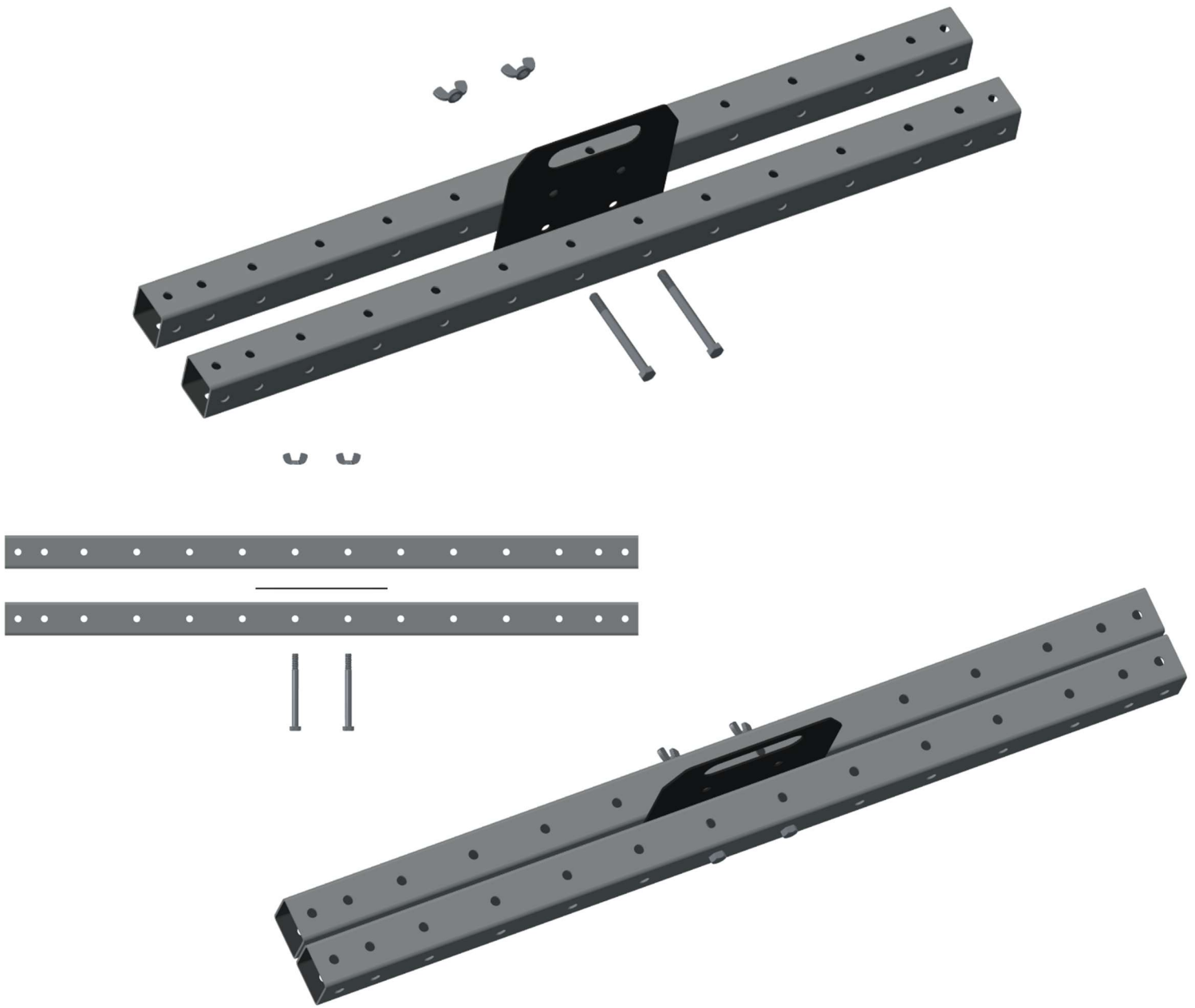
Set Up Time

Set up time should take approximately 5-10 minutes with at least 2 people.

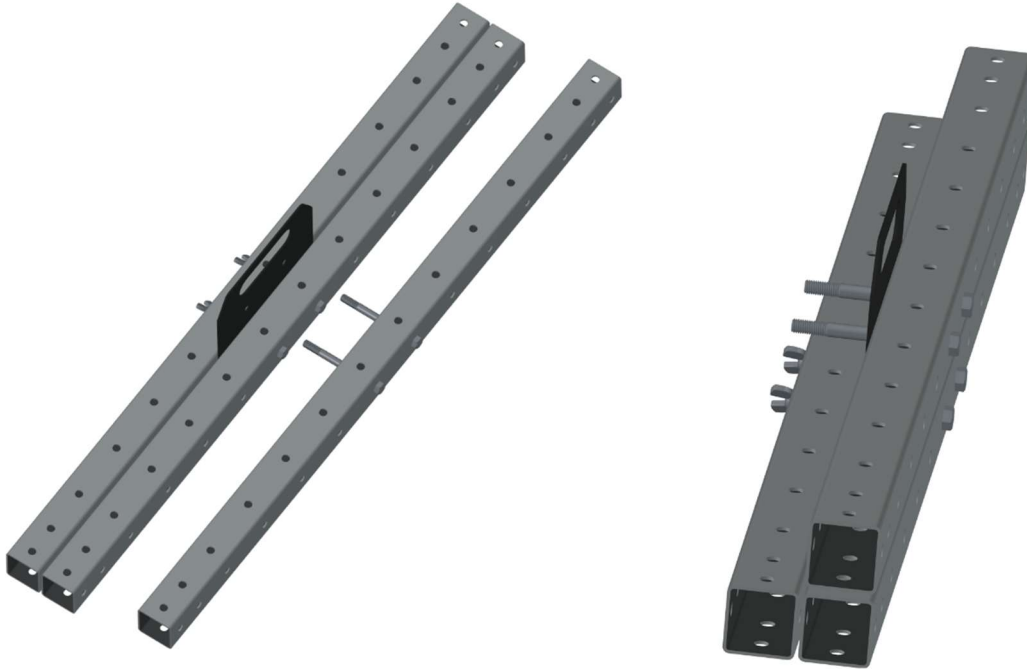
Assembly – Pitched Roof/Peaked Roof

1. Assembling the Tube Carriers

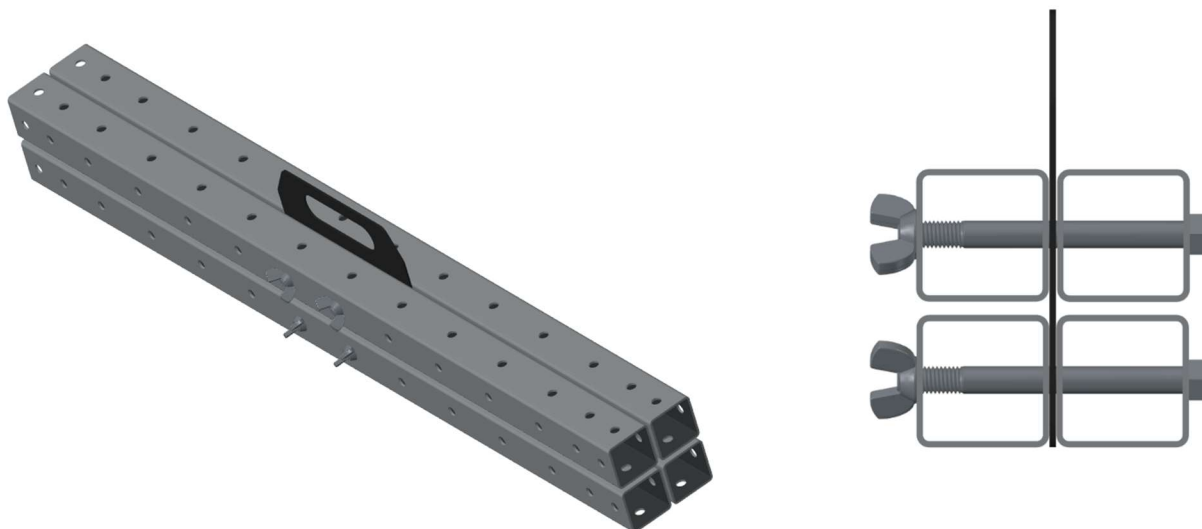
To assemble the tube carriers, start by placing 2 tubes parallel to one another. Insert the carrier plate between the tubes at the center 2 holes (the 7th hole from each end). Insert the long bolts through the tube and bottom holes of the plate and secure with wing nuts from the VTS unit supply.



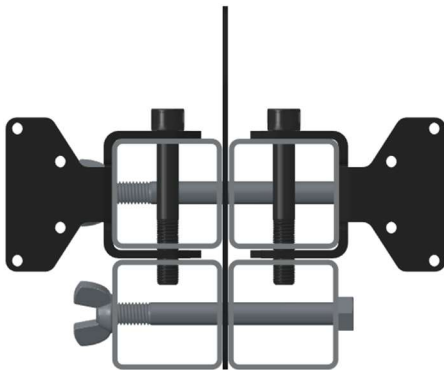
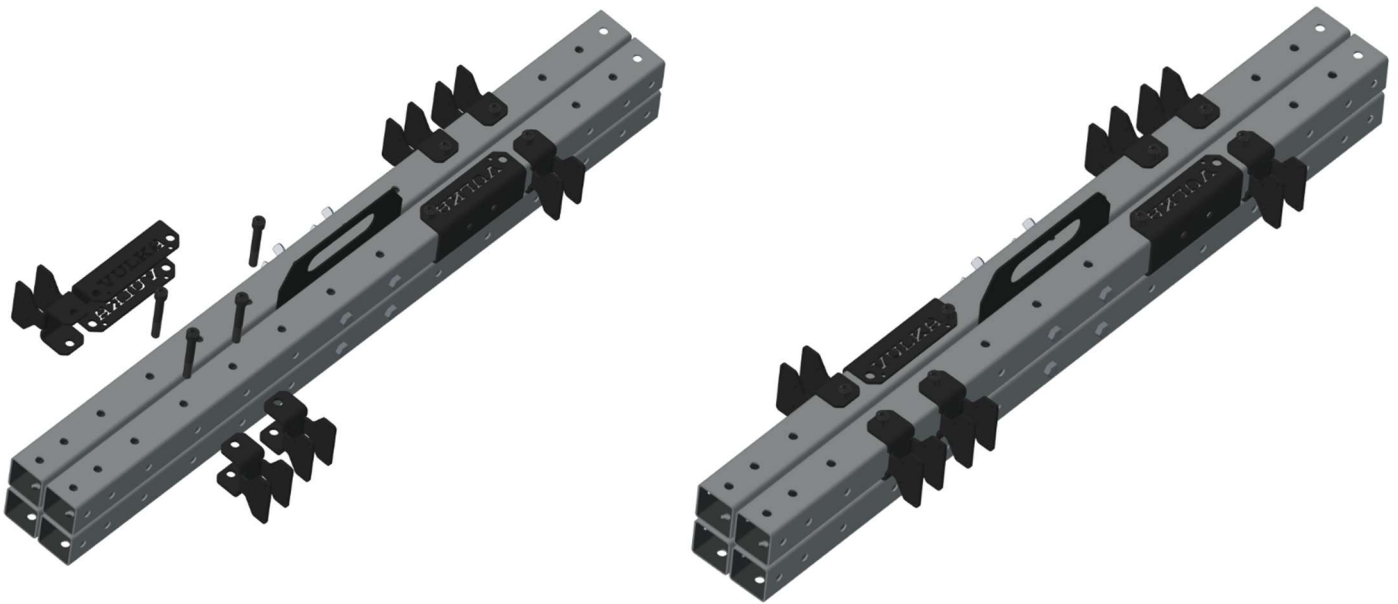
Next, insert the long bolts through the center holes of a single tube. Pass the bolts through the top holes of the plate. Note that the upper tubes will not sit directly on top of the lower tubes. This is by design, to allow the brackets to fit between the upper and lower tubes.



While holding the tube and bolts in place, slide the fourth tube on and secure with wing nuts.



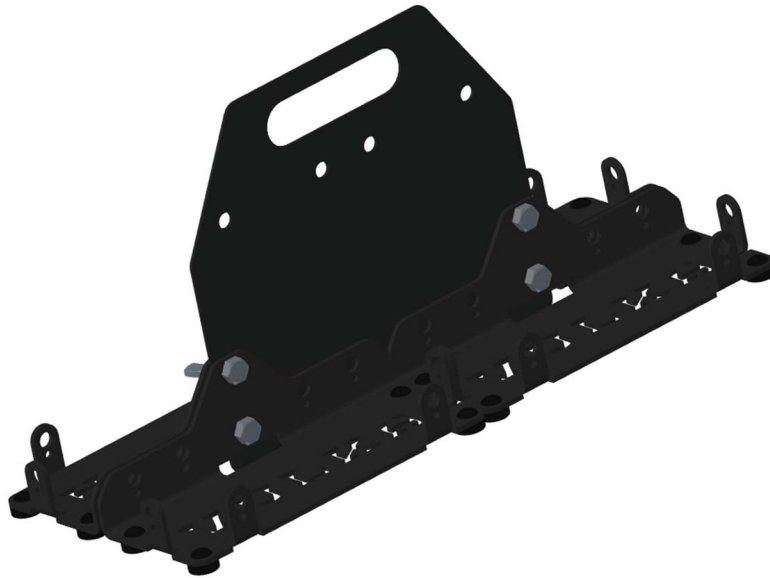
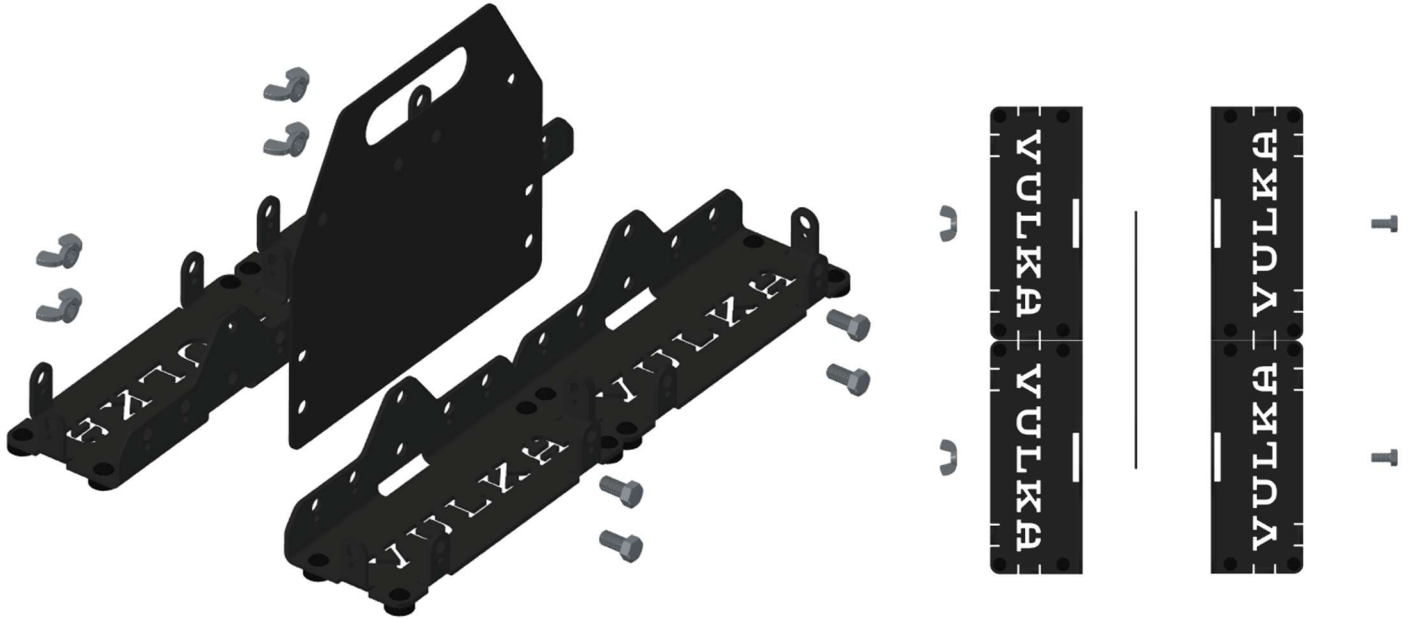
Insert the a total of (6) lumber brackets and (2) connectors total onto the top tubes as shown below and secure with a 3.5" length 1/2" bolt from the VTS unit supply. Note that the bolts are held in place by gravity and do not get secure with a wing nut.



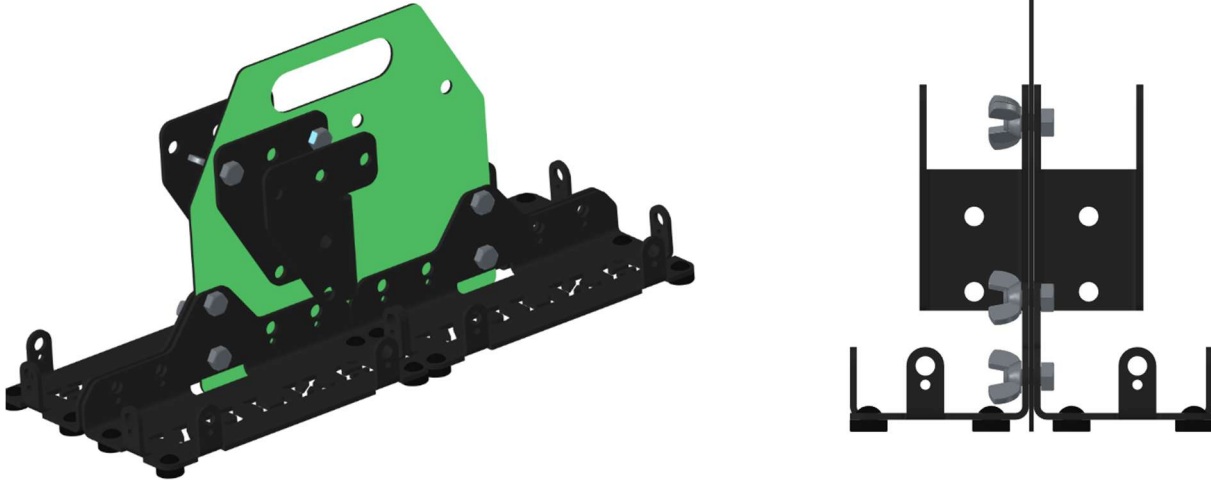
Repeat these steps for all tube, lumber brackets, and connector brackets.

2. Assembling the Base Carriers

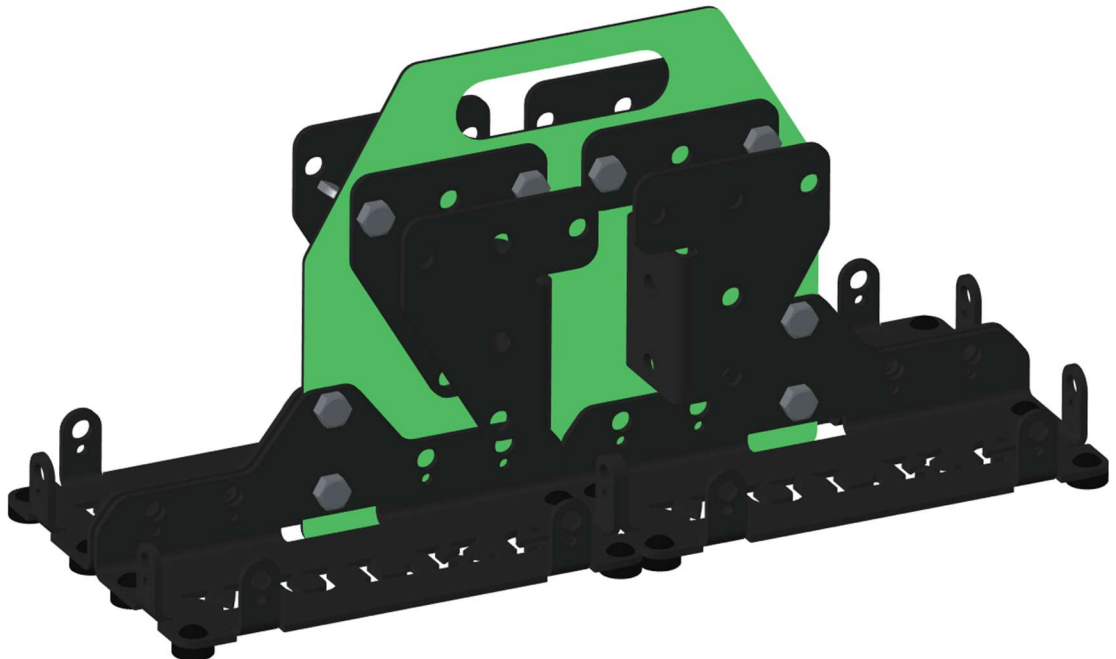
To assemble the base carriers, start by lining up 4 bases and a large carrier plate as shown below. Use the 1" long ½" bolts and wingnuts from the VTS unit to secure the bases together.



Next, add two elbows to opposite sides of the large plate and secure using 1" long ½" bolts and wingnuts from the VTS unit, as shown below (green color is used for contrast).



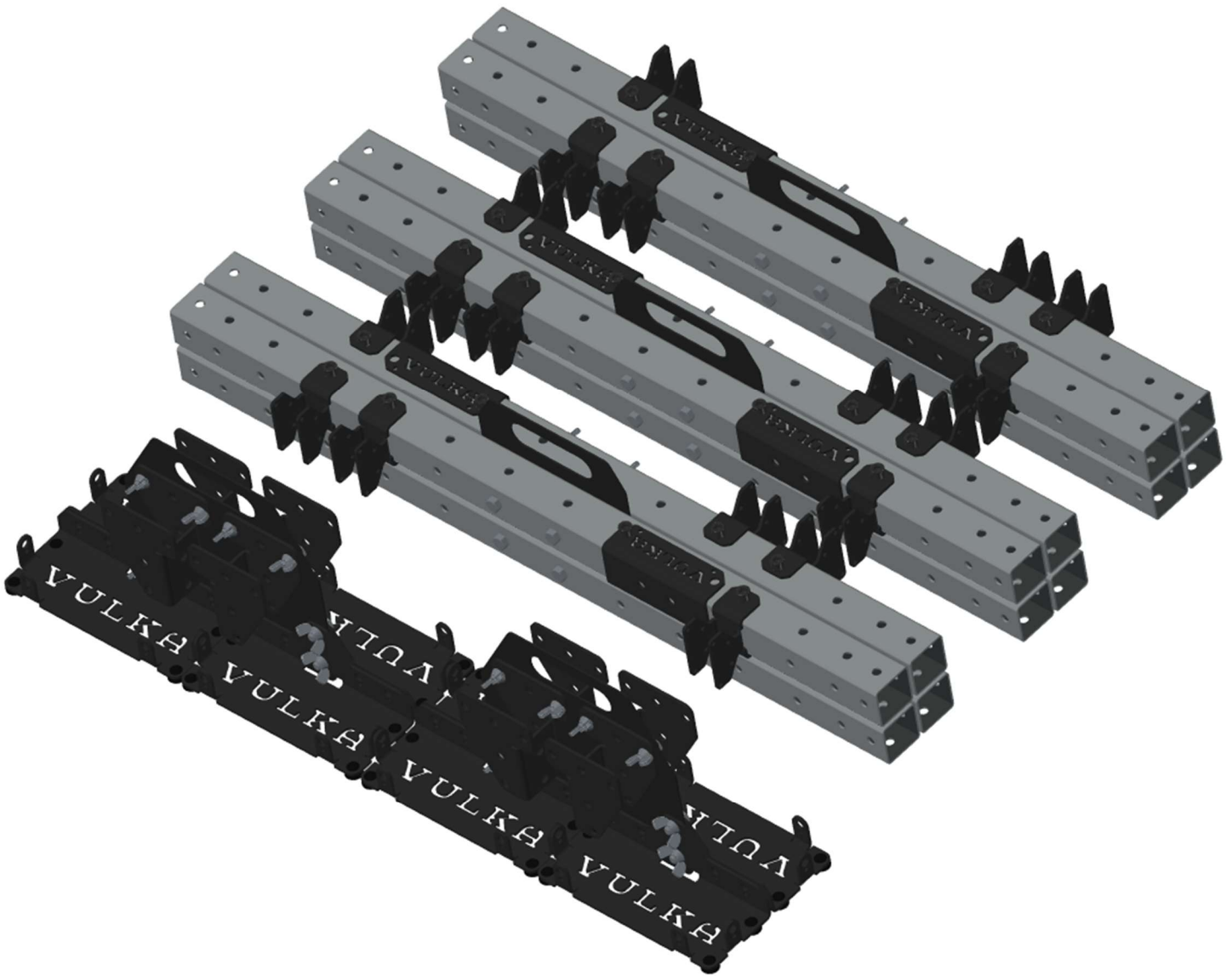
Repeat the process with two more elbows:



Repeat these steps for all bases and elbow brackets.

3. Final Assembly

All unused bolts, wing nuts, and tools can be placed in the heavy utility bag included with the Carrier System Add-On. The VTS is now ready for storage or transport.





Question? Concerns? Improvements?

Please be sure to reach out to us at support@vulkafire.com !

General information and additional configurations are available in their own Field Guide. Please be sure to check vulkafire.com.

Add-ons for the VTS are also available at vulkafire.com!

END OF GUIDE